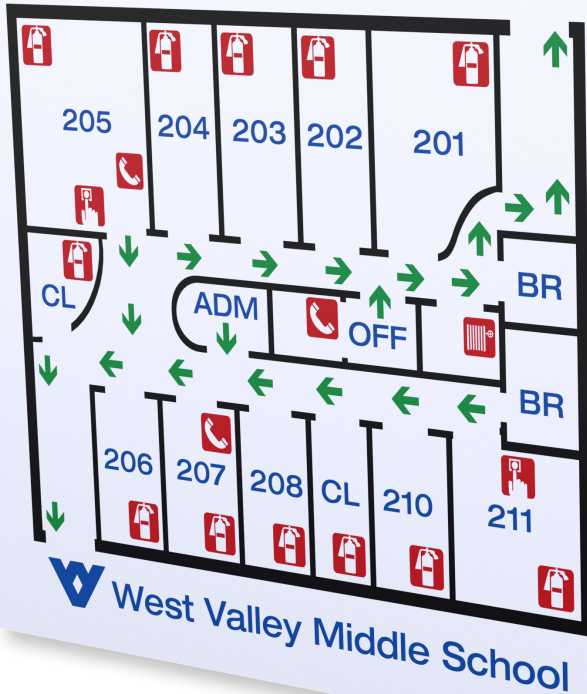


Duets
BY GEMINI

TM

Evacuation Plan

Second Floor



PATIENT EDUCATION



Signs of purpose

Introducing Duets Ultimates™ Reverse

New
PRODUCT

A sophisticated statement for demanding environments and ADA applications.

Duets Ultimates™ Reverse is laminated, impact modified acrylic featuring a clear, matte-finish top layer and a vivid, durable back layer in a wide range of colors. Reverse engrave your design with this rugged material for robust back lit or paint fill applications, and have complete confidence of increased resistance to abrasion and damage, even in industrial environments. **Enhanced function. Duets value.**



Versatile Duets Ultimates Reverse is also an ideal solution for ruggedized and detailed industrial labeling applications.

Learn more. Request samples:

bfplasticsinc.com/duets

800-866-7121

Request free 3" x 3" production samples

MADE BY
GEMINI

Data Sheet

Duets Ultimates Reverse



Ultimate durability and versatility starts with a clear face.

With its clear, matte-finish top layer, Duets Ultimates™ Reverse is the essential UV stable, interior/exterior-grade material for smooth-finish, non-glare signage, ADA and labeling solutions that stand up to punishment of any environment. Ultimates Reverse also lets you vastly expand the applications for your signage with the added value of multi-color paint fills or stunning backlighting effects. Many base colors that can be used in unison with our corresponding Duets Ultimates substrate for a complete solution.

Duets Ultimates Reverse MAXIMUM DURABILITY

APPLICATIONS

- Interior Signage
- Industrial Labeling
- Personal Identification
- Backpainted Signage
- Exterior Signage
- Tactile Signage
- ADA

CHARACTERISTICS

- UV stable
- Outdoor / indoor
- Reverse engravable
- Heat bendable
- Scores, drills
- Shears
- Saws, bevels
- Braille engravable
- Bondable
- UV print
- Vector cut
- Hot stamp, silk screen
- ADA compliant

SPECIFICATIONS

Material	Impact Modified Acrylic
Finish	Matte (non glare)
Thickness: <i>2-ply</i>	1/16" (1.6mm) 1/8" (3.2mm)
Engraving Method	Laser or Rotary Carbide (may require two passes)
Engraving Depth	.015" (.38mm)
Sheet Size: <i>Full</i>	24" x 49" (610mm x 1244mm)*

*Size is approximate

AVAILABLE IN 1/16" AND 1/8" THICKNESS

Color	1/16" Thickness	1/8" Thickness
Clear Matte/Black	X-000-106	X-000-108
Clear Matte/White	X-000-116	X-000-118
Clear Matte/Red	X-000-136	X-000-138
Clear Matte/Blueberry	X-000-226	X-000-228
Clear Matte/Blue	X-000-156	X-000-158
Clear Matte/Spring Green	X-000-176	X-000-178
Clear Matte/Yellow	X-000-146	X-000-148
Clear Matte/Chocolate Brown	X-000-166	X-000-168

RECOMMENDED LASER SETTINGS

(50 WATT SYSTEMS)

Raster Power: 45
 Raster Speed: 75
 DPI: 400
 1-2 Passes

Vector Power: 65
 Vector Speed: 40
 PPI: 400

1 Pass for 1/16" thickness
 2 Passes for 1/8" thickness

In stock and ready to ship.

To order or request free samples please visit bfplasticsinc.com/duets

or call us at **800-866-7121**

